

Injection Date : Thu, 2. Nov. 2023

Seq Line : 32

Location : 10

Inj. Vol. : 2 µl

Acq. Method : C:\Users\Public\Documents\ChemStation\1\Data\SE02NOV 2023-11-02
14-31-42\22010446C LCMS-6#.M

Analysis Method : C:\Users\Public\Documents\ChemStation\1\Data\SE02NOV 2023-11-02
14-31-42\22010446C LCMS-6#.M (Sequence Method)

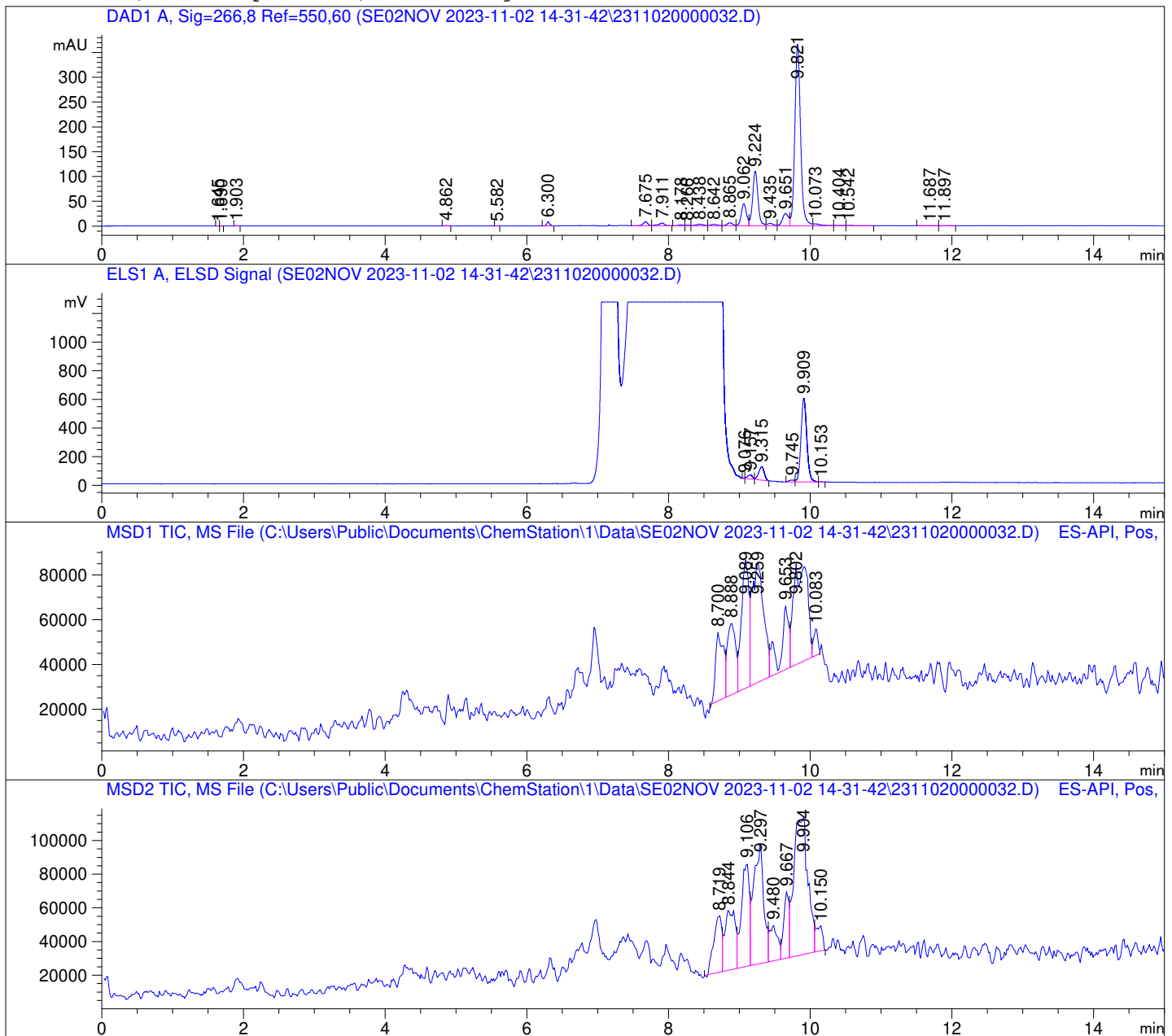
Waters XBridge BEH Amide (4.6 x 150 mm, 2.5 µm); PN# 186006726

Mobile Phase A: 20mM Ammonium Acetate (aq) pH 8.2

Mobile Phase B: AcN

Mobile Phase A / Mobile Phase B: 5/95 (0 min) --> (10 min) --> 60/40 (5 min); Flow:

1.0 ml/min; MSD1 = positive; MSD2 = negative



DAD1 A, Sig=266,8 Ref=550,60

Peak #	Ret. Time [min]	Area [mV *s]	Area %
1	1.645	0.182	0.006
2	1.690	0.372	0.011
3	1.903	1.996	0.061
4	4.862	2.430	0.075
5	5.582	0.402	0.012
6	6.300	23.140	0.712
7	7.675	36.079	1.110
8	7.911	31.107	0.957
9	8.178	6.424	0.198
10	8.266	3.381	0.104
11	8.438	20.486	0.630
12	8.642	15.805	0.486
13	8.865	31.159	0.959
14	9.062	225.373	6.935
15	9.224	571.569	17.589
16	9.435	27.893	0.858
17	9.651	146.689	4.514
18	9.821	2068.813	63.663
19	10.073	27.415	0.844
20	10.404	3.921	0.121
21	10.542	3.307	0.102
22	11.687	0.942	0.029
23	11.897	0.766	0.024

ELS1 A, ELSD Signal

Peak #	Ret. Time [min]	Area [mV *s]	Area %
1	9.076	6.705	0.165
2	9.157	142.522	3.506
3	9.315	512.769	12.614
4	9.745	68.008	1.673
5	9.909	3328.510	81.879
6	10.153	6.658	0.164

